

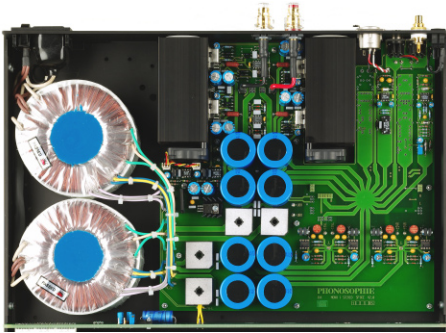
**SPIKE MONO**

**SPIKE MONO 1 Channel Power-Amp**

The SPIKE represents the very pinnacle of our advanced technology. A professional German hifi reviewer explained, what's sharp about our SPIKE:

“This amplifier makes the listener sweat, suffer, celebrate, dance and cry out loud. ... such a pure and unaltered experience of musical directness has not been reached by any other amplifier. What happened here blew away even the normal benchmarks of hi-fi. ... it could be described as the direct conversion of electricity to adrenalin.”

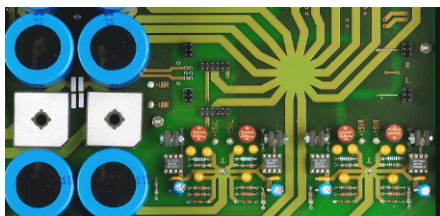
STEREO / HOLGER BARSKE



**CHARACTERISTICS**

1 x 160 Watts continuous output into 8-Ohm loads; 2-step transformer circuit with high performance toroidal transformer for the input and power gain stage; separate transformers for positive and negative wave; 4 identical poweramps are operating together as a mono poweramp; selfcontrolling bias, variable speed intelligent fan system; AUDIO-Inputs: Phono (RCA), balanced XLR female & 5-Pin DIN.

More live! In order to realise this objective for the SPIKE Power amps, we decided to leave the conventional design path, opting for uncompromising circuitry with the fastest possible reaction time and power supply efficiency. Four layer circuit technology to attain a higher switching component density. Ultra-short power connections and signal paths.



To redefine the complete behaviour of the circuit in terms of reaction speed, impulse and power delivery, the copper conductors are up to four times thicker than usual. Two high quality 250 VA transformers judiciously supply the output stages with enough energy. Current and voltage regulation are covered by integrated amplifier chips, two small fans keep things cool during the loud parts!

Don't let the moderately rated, output power mislead you. The Spike has the ability to redefine timing and immediacy of dynamics. Musical aspects of the sound blend into the background, as the intensity of the musical performance reaches the listener on another level.

The SPIKE MONO is derived directly from SPIKE STEREO. More energy is available, particularly to power impulses. That means total control, ample dynamic resources and precision signal processing.



More connection. On the input stage, you can choose between a variety of connectors: XLR for symmetrical connections, unsymmetrical over RCA and DIN. A switch allows the choice between the balanced and unbalanced signal paths.

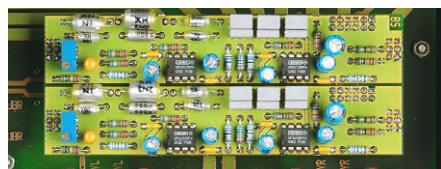
The speakers are connected via high grade banana sockets. This kind of plug offers the most contact area for the best possible energy transfer. The power amps are equipped with gold-plated WBT connectors as standard.



Less vibration. PHONOSOPHIE uses cases made of carefully treated aluminium (4 mm thick) with finest grade of surface polishing. In contrast to the heavy armour wrapped around common high end audio components, it will not suffer from vibration energy trapped between thick metal sheets.

Instead, this kind of lean construction offers more control when dealing with vibrations as they are eliminated from the cabinet in the shortest time possible.

To reduce vibration effects even further, you can use our racksystem, which is complimentary to the cabinets design and supports them perfectly for optimum sound reproduction.



More options. SPIKE power amps are readied to include the easy integration of BI-BUTT and X-OVER modules.

Bi-Butt kicks your... and gets you closer to the stage. The optional Bi-Butt board (erhem, stands for double Butterworth filter, or what did you think?) enables the adaptation of the speakers to the room. By limiting the bandwidth on both ends of the frequency range, the filter board is used in our integrated amplifiers, to improve the inherent dynamic behaviour of the amp and precision of the individual channels.

It's not over till X-OVER. This optionally available Active X-OVER offers full control of a multi channel amplifier configuration. You can activate and precisely adjust your passive speakers from brands like Naim, Linn, PHONOSOPHIE and others.

**TECHNICAL DATA**

Max. Output power: RMS (8/4 Ohms):	160/250 Watts
Sine burst (2 Ohm):	450 Watts
Low impedance capability	1.4 Ohms
Input impedance	22 kOhms
Sensitivity	0.707 V
Power Supply	
Mains voltage	230V ~ 50 Hz
Power consumption	min. 20 Watts max. 280 Watts
Mains fuse	230V / 3.15 A
Dimensions (W x H x D):	447 x 70 x 340 mm
Weight:	approx 7 kg

**STANDARD ITEMS SUPPLIED**

- PHONOSOPHIE SPIKE MONO
- Power cord CU (Powercord with copperplated contacts)
- 2 x Banana plugs for speakers (CU)
- Signal cord
- Owner's manual

**BTO-OPTIONS (BUILD-TO-ORDER)**

Besides choosing the standard version, you can make use of the option, to purchase an individually configured SPIKE MONO at your authorized PHONOSOPHIE dealer. These BTOs are:

- Version AG (Powercord with silverplated contacts)
- Bi-Butt module
- X-over module
- Export version (115 V / 60 Hz)

**ATTENTION!** Only buy Phonosophie equipment after you have heard it! The design and construction of our components does not necessarily follow normal Hi-Fi practice. So please check first that "more live" corresponds to your own requirements for music reproduction!